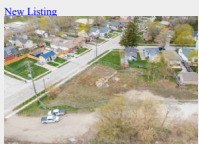


All
Real
Estate
Listings



[Residential Building Lots, Guelph](#)

Newly created residential building lots in Exhibition Park area in the Junction. This is a great family neighbourhood! Walking distance to The Fixed Gear Brewing Canteen, [more](#)

[New Listing](#)



[Tottenham Estate Property](#)

An incredible opportunity to acquire this 80 acre parcel to build your country estate! This property consists of rolling hills which is the ideal building location to enjoy [more](#)



[Georgian Bay Beach House, Tiny](#)

Indulge in unmatched beachside living with a 2700 sq. ft. custom designed home on Nottawaga Beach This distinctive 5-bedroom, 4-bathroom 1.5-storey home includes a separate [more](#)

[New Price](#)



[Apple Ridge Farm](#)

Apple Ridge is truly a special property. A private estate of over 100 acres for those seeking the best view in Caledon, gazing at the stars while watching the lights of the [more](#)

[New Listing](#)



[King Country Home](#)

Renovated country home & studio plus a restored century bank barn close to Kettleby on almost 5 acres. Convenient to area schools, Aurora and Highway 400. Crisp [more](#)

[New Listing](#)



[Percy Lake 75 Acres](#)

A rare opportunity to acquire an incredibly large estate lot property. With just shy of 1/2 a mile of water frontage. This stunning 75-acre property is already subdivided [more](#)

[New Listing](#)



[Caledon Farmland Investment Opportunity](#)

A must see investment property and/or gorgeous country retreat! A beautiful 145 acre farm that stretches from Mountainview Road to Airport Road, just north of Caledon East. [more](#)

[New Listing](#)



[Percy Lake, Haliburton](#)

Privacy, guaranteed on an untouched 4.5 acre south-facing cove lot, Flatware Cove Trail. Over 400 feet frontage of sandy beach, crystal clear water, building lot covered in [more](#)



[171 Kingscross Drive, King](#)

Elegant 4-bedroom home in prestigious Kingscross Estates. Fully renovated home on private 2-acre lot with pool. Minutes to top schools. Wonderful flow for entertaining, with [more](#)

[Sold](#)

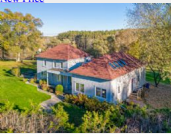


[Admirals Gate, Collingwood](#)

Don't miss this incredible waterfront opportunity in the highly sought-after Admirals Gate! This stunning end unit offers a truly spectacular living experience, boasting [more](#)



[2686 Brennan Line](#)
107 acres (as per Geowarehouse) of breathtaking land to build your dream country estate. All the privacy you could wish for. A prime building lot just 15 minutes to Orillia. [_more](#)
[New Price](#)



[Clover Creek Farm](#)
Charming property with views over your own valley. 5 bedroom updated century home + guest house and an immaculate bank barn with 5 stalls. A wonderful layout with walk-out [_more](#)
[Sold](#)



[Dufferin Estate Lot](#)
The building lot you have been waiting for! Conveniently located minutes north of Davis Drive West on Dufferin Street, in prestigious King Township. 36 acres of mature [_more](#)
[New Listing](#)



[32 Webber Island](#)
One of the last opportunities to build on Webber Island! A 2.6-acre premium lot with 469 ft. of west-facing shoreline, mixes smooth granite and a natural beach. The building [_more](#)
[Sold](#)



[Bond Hill - Country House Investment](#)
Amazing views from this privately sited home on 25 acres. A country property with long-term investment potential. Open lands border developer owned lands. Buy land and wait! [_more](#)
[Sold](#)



[85 Acres Near Urban Boundary](#)
Here is your chance to acquire 85 acres close to an urban boundary! 2 houses and outbuildings. Main residence is a well constructed walk-out bungalow with a footprint of 3800 [_more](#)
[Coming Soon!](#)



[Sandy Island, Georgian Bay](#)
Wow! Sandy Island cottage on 5.75 acres with your own beach, long southwest views & an industrial strength dock. Come relax on Georgian Bay. [_more](#)
[Reduced](#)



[Original 8th Concession Estate](#)
One of King townships most noted properties! Character filled original brick home with an impressive glass and stone addition overlooking the spectacular gardens, stone [_more](#)
[Sold](#)



[687 acre Land Banking Opportunity](#)
One of the largest parcels of privately owned land in all of York Region! 687 acres located on the border of Newmarket. [_more](#)
[New Listing](#)



[30 Webber Island, Honey Harbour, Georgian Bay](#)
One of the last premium lots of this calibre being offered. 4.2-acre southern peninsula of Webber Island with 1417 ft. of meandering shoreline featuring protective coves, [_more](#)
[New Listing](#)



[Stone House on 60 acres](#)
A storybook setting! An original Ontario stone house with board & batten addition set alongside a spring-fed pond with forested hills and open meadows! A charming 3-bay [_more](#)
[Sold](#)



[1600 Acre Private Island, Georgian Bay](#)
Located off the western shores of Georgian Bay, measuring approximately 1600 acres in size is the ruggedly beautiful Hay Island. It's one of the largest privately held [_more](#)
[Sold](#)

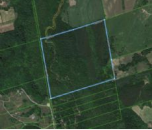


[100 Acres, King](#)
It's getting harder and harder to find large vacant acreage in King. 100 gently rolling acres with scenic views, neatly cropped land plus mature woodlot and pond. [_more](#)
[New Price](#)





[Glenagate Farm](#)
Glenagate Farm is a 90 acre, working standardbred breeding farm located just outside of Hillsburgh, Ontario. Through the impressive front iron gate are two fully [_more](#)
[Sold](#)



[Hockley Valley Land](#)
Very private, blank canvas of just under 100 acres on a no-through way road. Minutes outside of Hockley Valley is this increasingly rare to find opportunity to acquire a [_more](#)
[Sold](#)



[90+ Acre Private Peninsula, Cognishene](#)
The 90+ acre peninsula situated north-west of Bone Island offers a unique mixture of undulating elevations, an abundance of forest, and various granite outcroppings. Flanked [_more](#)
[Sold](#)



[Bolton Development Lands](#)
Rare land development opportunity in Bolton! 142 acre farm on height of land of which 35.8 acres are whitebelt and designated URBAN as part of Bolton's planned expansion [_more](#)
[New Price](#)



[Top Calibre Horse Farm](#)
Set on approx. 50 acres is this award-winning horse farm built by Dutch Masters. The mature tree-lined drive leads to the elegant 4-bedroom, 4.5 bathroom stone and stucco [_more](#)
More : [Prev](#) | [234567](#) | [Next](#)

[All](#)
[Properties](#)
[Home](#)
[About](#)
[Contact](#)
[Services](#)
[Testimonials](#)
[Blog](#)
[FAQ](#)
[Privacy](#)
[Terms](#)
[Sitemap](#)
[Home](#)
[About](#)
[Contact](#)
[Services](#)
[Testimonials](#)
[Blog](#)
[FAQ](#)
[Privacy](#)
[Terms](#)
[Sitemap](#)

MOFFAT DUNLAP
REAL ESTATE LIMITED
Moffat Dunlap Real Estate Limited, Brokerage
166-30 Dufferin Street, King City, ON L7B 1K5
Tel: 905-841-7430 [www.moffatdunlap.com](#)



Moffat Dunlap
Real Estate Limited,
Brokerage
166-30 Dufferin Street
King City
ON L7B 1K5
905-841-7430
[Home](#) | [About Us](#)
[Website Design by: www.moffatdunlap.com](#)

[Home](#) | [Privacy](#)
[Contact](#)
[About Us](#)
[Services](#)
[Testimonials](#)
[Blog](#)
[FAQ](#)
[Privacy](#)
[Terms](#)
[Sitemap](#)

X
Keyword(s)
Search
X

[English](#)
[Afrikaans](#)
[Arabic](#)
[Chinese \(simplified\)](#)
[Chinese \(Traditional\)](#)
[Danish](#)
[Dutch](#)
[Finnish](#)
[French](#)
[German](#)
[Greek](#)
[Hebrew](#)
[Hindi](#)
[Icelandic](#)
[Indonesian](#)
[Italian](#)
[Japanese](#)
[Korean](#)
[Norwegian](#)
[Persian](#)
[Polish](#)
[Portuguese](#)
[Punjabi](#)
[Russian](#)
[Spanish](#)
[Swedish](#)
[Thai](#)
[Turkish](#)
[Urdu](#)
[Vietnamese](#)
[English](#)
[Italian](#)
[Afrikaans](#)
[Japanese](#)
[Arabic](#)
[Korean](#)
[Chinese](#)
[Norwegian](#)
[Persian](#)
[Polish](#)
[Portuguese](#)
[Punjabi](#)
[Russian](#)
[Spanish](#)
[Swedish](#)
[Thai](#)
[Turkish](#)
[Urdu](#)
[Vietnamese](#)
[Icelandic](#)
[Indonesian](#)